



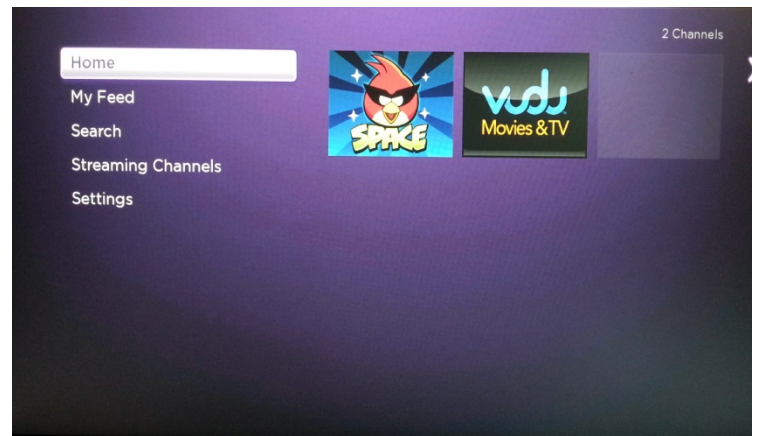
ORLAND PARK
PUBLIC LIBRARY

A Natural Connection

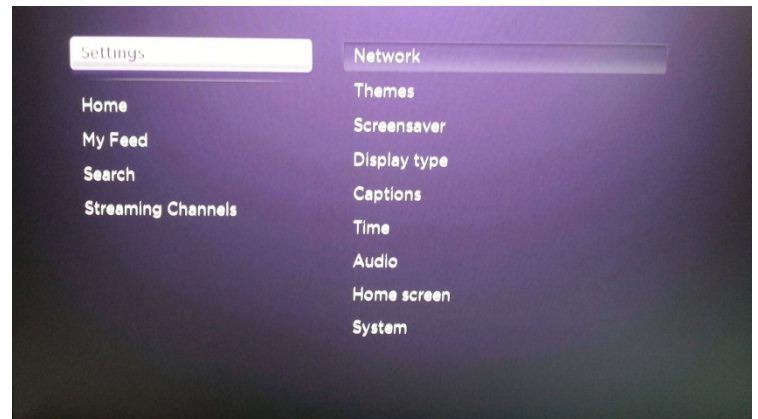
Orland Park Public Library Computer Help Desk 708-428-5171
helpdesk@orlandparklibrary.org orlandparklibrary.org

Getting Started

The first thing you need to do to start using the device is connect to the internet. Using the Roku Remote press the down button until Setting is selected and hit OK.



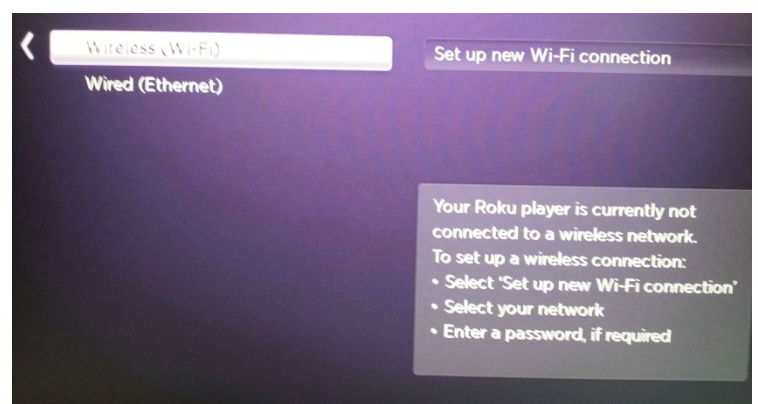
Once in Settings hit right on the remote to select Network and hit ok



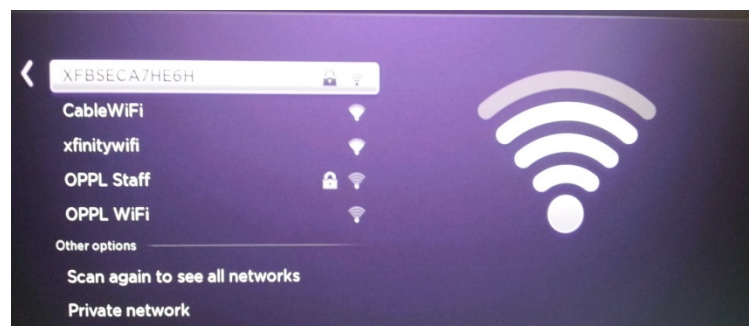
On the Roku3 you will have the option of connecting via Wireless or Wired. On the Roku2 you will only have the option to connect wirelessly. Once you've made your selection hit OK.



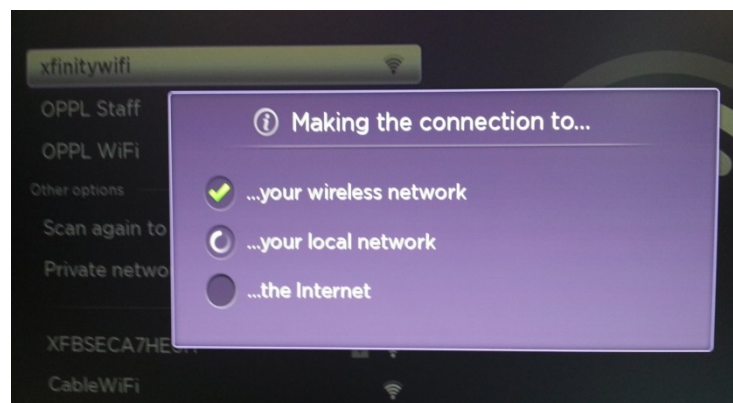
Use your right arrow button and select "Setup new WIFI connection"



You will now need to select your wifi channel from the ones available. If yours does not show up, select Scan again to see all networks and try again.



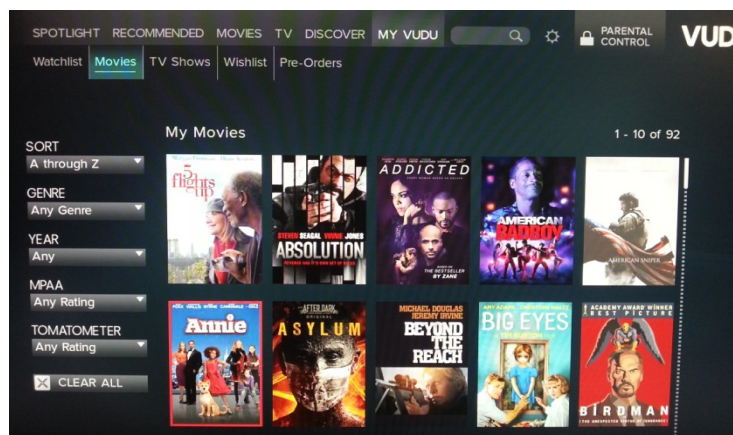
When you select your network, it will ask for your modem security key that is usually located on your modem. After you enter the key, which is letters and numbers, press the “ok” button. The device will authenticate your security key, and all checks “✓” means you are connected.



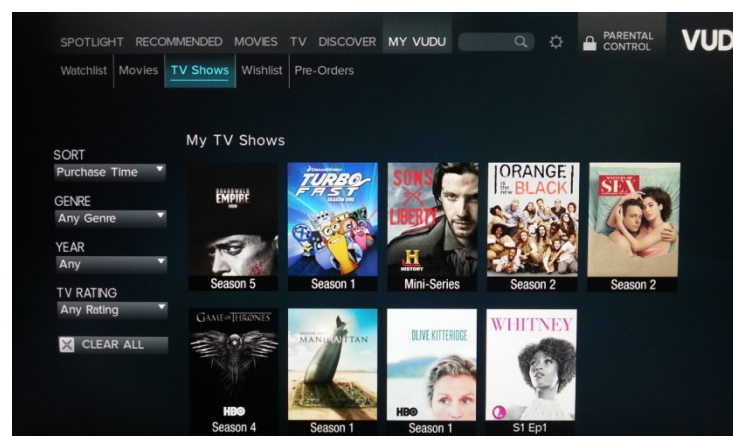
Once you are connected hit the Home button on the remote to go back to the channel selection screen.

On the home screen arrow over to the channel Vudu Movies & TV and hit the OK button.

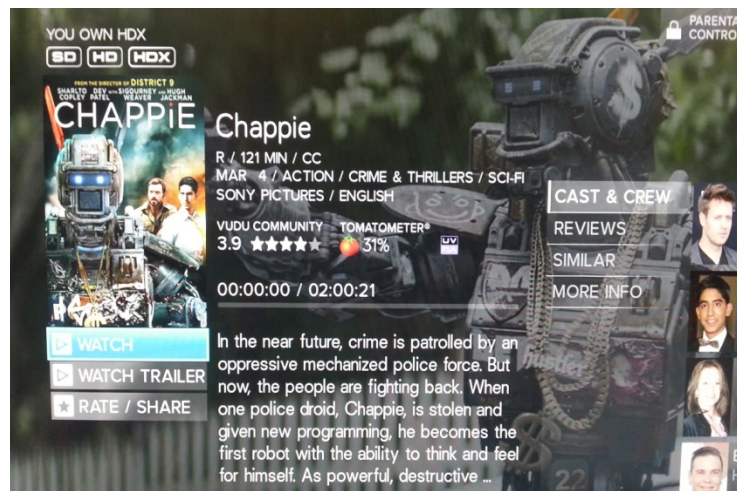
Once you are in Vudu arrow over to the right until My Vudu is selected. In My Vudu arrow over to either Movies or TV Shows to view the list of available titles to watch.



It is here that you can select what title you want to watch. You have options to the left to sort the list or narrow the selection down to genre, year, rating, or tomatometer (A rating connected to the website www.rottentomatoes.com). Use the arrow buttons on the Roku remote to navigate to where you want to go.



Now that you have found the title you want to watch, hit the OK button to begin playing your selection.



While the title is loaded and running, at any point you can hit down on the arrow pad to bring up the player controls

1. Goes back to the movie selection screen
2. Rewind 15 seconds for an instant replay
3. You can select the screen quality from standard definition all the way to 4k quality
4. Scene selection option to skip around to a specific scene in the movie
5. Rewind
6. Play/pause
7. Fast Forward
8. Closed Captioning
9. Movie Length

