



ORLAND PARK PUBLIC LIBRARY

ORLAND PARK PUBLIC LIBRARY

ISSUE FOR BID

14921 S. RAVINIA AVE
ORLAND PARK, IL 60462

9.16.19



ORLAND PARK PUBLIC LIBRARY



Wight & Company
wightco.com
2500 North Frontage Road
Darien, IL 60561
P 630.969.7000
F 630.969.7979

michael c barnes
ARCHITECT

michael c barnes architect, pllc
design architect
(312) 877-0130
mcbarnes@mcbarnesarchitect.com

PROJECT TEAM

DESIGN ARCHITECT: MICHAEL C. BARNES PHONE: 312.877.0130 CONTACT: Michael Barnes	ARCHITECT OF RECORD: WIGHT & COMPANY 211 NORTH CLINTON SUITE 300N CHICAGO, IL 60661 PHONE: (312) 261-5700 FAX: (312) 261-5701 CONTACT: Michael Barnes Design Firm Registration #184-000451
---	---

INDEX OF DRAWINGS

GENERAL
G0.00 COVER SHEET

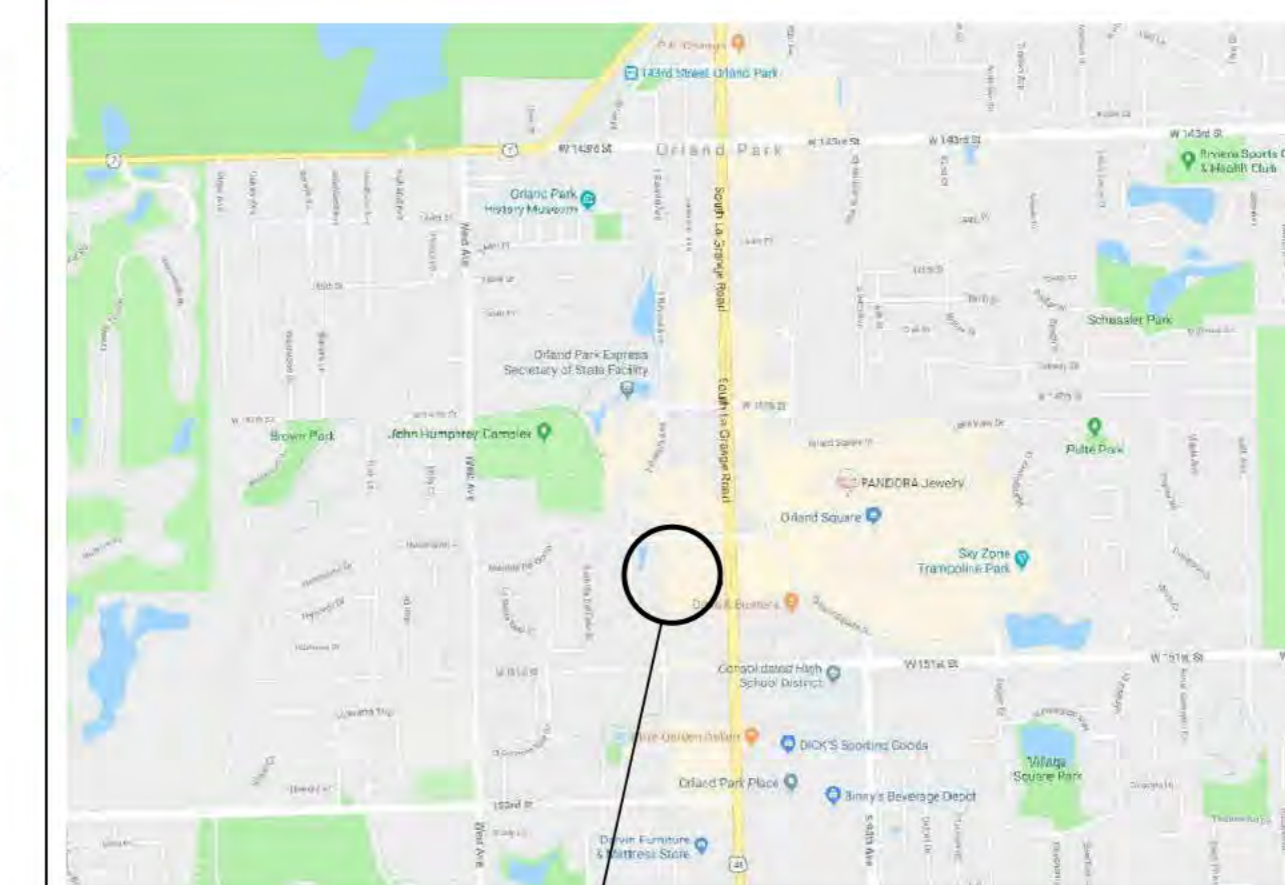
ARCHITECTURAL
A11.01A FURNITURE PLAN LEVEL 1 AREA A
A11.01B FURNITURE PLAN LEVEL 1 AREA B
A11.02A FURNITURE PLAN LEVEL 2 AREA A
A11.02B FURNITURE PLAN LEVEL 2 AREA B

Grand total: 5

GENERAL NOTES

1. FURNITURE ITEMS TAGGED WITH EX, ARE EXISTING INVENTORY PIECES TO BE PROVIDED BY OWNER AND INSTALLED BY OWNER.
2. FURNITURE CONTRACTOR IS RESPONSIBLE FOR ALL QUANTITIES OF FURNITURE ITEMS AS TAGGED IN THE FURNITURE PLAN. THE FURNITURE PLANS TAKE PRECEDENCE OVER SCHEDULES OR SPREADSHEET. FURNITURE CONTRACTOR TO CONTACT ARCHITECT OF ANY DISCREPANCIES FOR CLARIFICATION.

LOCATION MAP



14921 S. RAVINIA AVE
ORLAND PARK, IL 60462

**NOT FOR
CONSTRUCTION**

ORLAND PARK
PUBLIC LIBRARY

14921 S. RAVINIA AVE
ORLAND PARK, IL 60462

COVER SHEET

Project Number:
190041
Drawn By:
EO
Sheet:

GO.00

9/17/2019 8:51:24 PM
C:\Users\mcbarnes\Documents\REV\1708-5662-01_ORPL_Furniture_2019_Central_job\mcbarnes\2019.rvt
Wight & Co. © Copyright 2019. All rights reserved. No part of these documents may be reproduced, stored, or transmitted in any form or by any means, electronic, mechanical, photocopying, recording or otherwise, without the prior written consent of Wight & Co.

01/30/2019 4:00:03 PM
C:\Users\ebarnham\Documents\REV\108-5992-01 OPPPL Furniture 2019 Central_ebarnham02/09/19.rvt
Wight & Co. © Copyright 2019. All rights reserved. No part of these documents may be reproduced, stored, or transmitted in any form or by any means, electronic, mechanical, photocopying, recording or otherwise, without the prior written consent of Wight & Co.

GENERAL NOTES
1. THE FURNITURE PROCUREMENT AND INSTALLATION WILL OCCUR DURING A PHASED CONSTRUCTION. SEE THE PROJECT MANUAL FOR THE ESTIMATED TIMELINE FOR EACH PHASE OF CONSTRUCTION.
2. THE FURNITURE DEALER WILL BE REQUIRED TO COORDINATE PROCUREMENT TIMELINE WITH THE CONSTRUCTION MANAGER'S PROJECT SCHEDULE.
3. GRAY TONE AREAS ARE NOT IN CONTRACT FOR FURNITURE SCOPE OF WORK.



1 FURNITURE PLAN LEVEL 1 AREA A
SCALE: 1/8" = 1'-0"



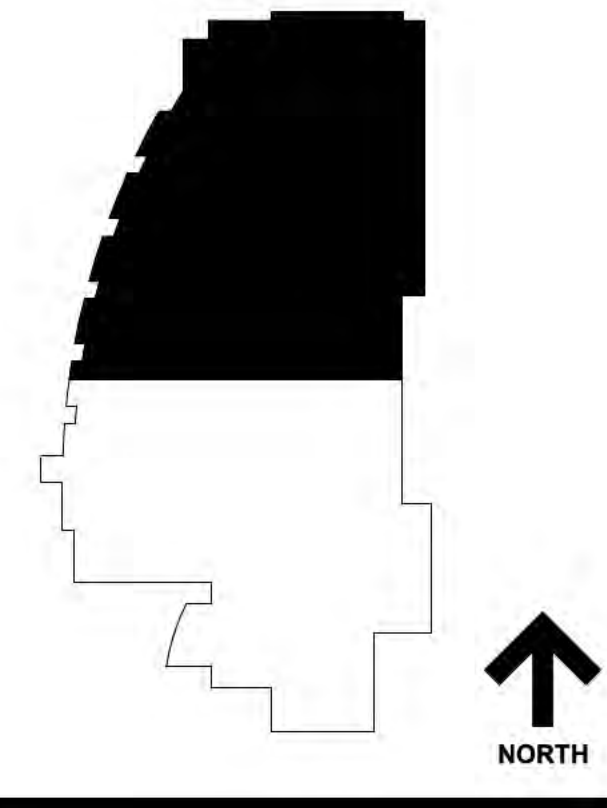
ORLAND PARK PUBLIC LIBRARY

Wight

Wight & Company
wightco.com
2500 North Frontage Road
Darien, IL 60561
P 630.969.7000
F 630.969.7979

michael c barnes
ARCHITECT

michael c barnes architect, pllc
design architect
(312) 877-0130
michael@mcbarnesarchitect.com



NOT FOR CONSTRUCTION

ORLAND PARK PUBLIC LIBRARY

14921 S. RAVINIA AVE
ORLAND PARK, IL 60462

FURNITURE PLAN LEVEL 1 AREA A

Project Number:
190041
Drawn By:
EO
Sheet:

A11.01A

01/30/2019 4:08:11 PM
 C:\Users\ebarnard\Documents\REV\108-5982-01 OPPJ Furniture 2019 Central_ebarnard\02\F09.rvt
 Wight & Co. © Copyright 2018 All rights reserved. No part of these documents may be reproduced, stored, or transmitted in any form or by any means, electronic, mechanical, photocopying, recording or otherwise, without the prior written consent of Wight & Co.



1 FURNITURE PLAN LEVEL 1 AREA B
 SCALE: 1/8" = 1'-0"

GENERAL NOTES

1. THE FURNITURE PROCUREMENT AND INSTALLATION WILL OCCUR DURING A PHASED CONSTRUCTION. SEE THE PROJECT MANUAL FOR THE ESTIMATED TIMELINE FOR EACH PHASE OF CONSTRUCTION.
2. THE FURNITURE DEALER WILL BE REQUIRED TO COORDINATE PROCUREMENT TIMELINE WITH THE CONSTRUCTION MANAGER'S PROJECT SCHEDULE.
3. GRAY TONE AREAS ARE NOT IN CONTRACT FOR FURNITURE SCOPE OF WORK.

KEYNOTES

- F12 EXISTING BOARD ROOM TABLE TO BE REUSED. CONTRACTOR TO PLACE IN SMALL MEETING ROOM 151.
- F13 EXISTING PRIVATE OFFICE FURNITURE TO BE COORDINATED BY OWNER'S FURNITURE DEALER.



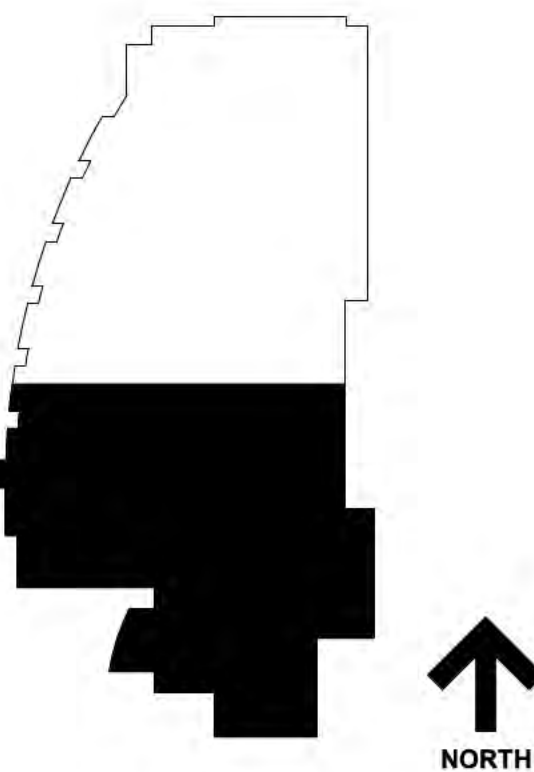
ORLAND PARK PUBLIC LIBRARY

Wight

Wight & Company
 wightco.com
 2500 North Frontage Road
 Darien, IL 60541
 P 630.969.7000
 F 630.969.7979

michael c barnes
 ARCHITECT

michael c barnes architect, pllc
 design architect
 (312) 877-0130
 michael@mcbarnesarchitect.com



NOT FOR CONSTRUCTION

V SS B SS 9 9

ORLAND PARK PUBLIC LIBRARY

14921 S. RAVINIA AVE
 ORLAND PARK, IL 60462

FURNITURE PLAN LEVEL 1 AREA B

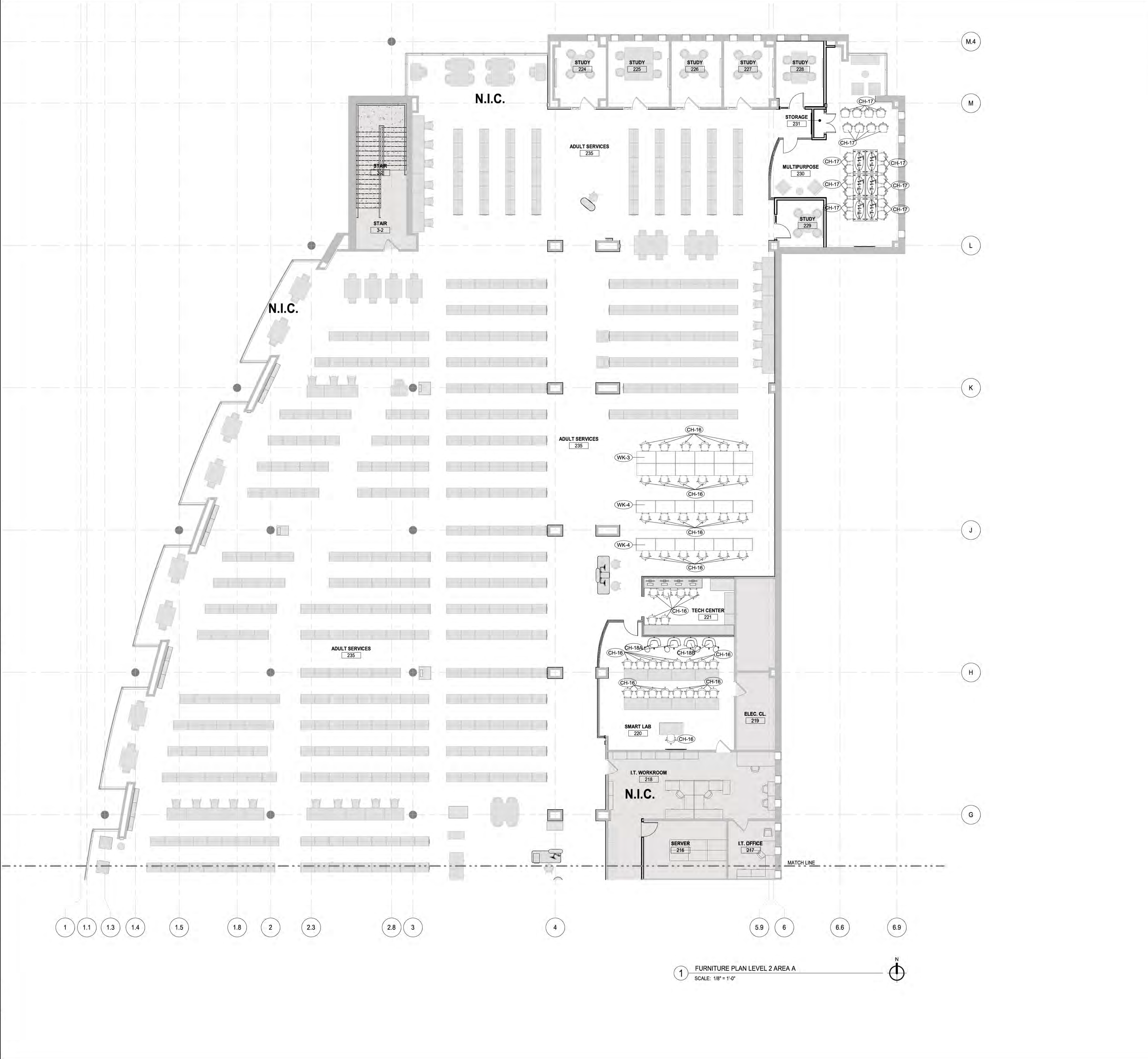
Project Number:
 190041
 Drawn By:
 EO
 Sheet:

A11.01B

01/30/2019 4:09:32 PM
 C:\Users\ebarnard\Documents\REV\108-5992-01 OPPJ Furniture 2019 Central_ebarnard02/09.rvt
 Wight & Co. © Copyright 2018 All rights reserved. No part of these documents may be reproduced, stored, or transmitted in any form or by any means, electronic, mechanical, photocopying, recording or otherwise, without the prior written consent of Wight & Co.

GENERAL NOTES

1. THE FURNITURE PROCUREMENT AND INSTALLATION WILL OCCUR DURING A PHASED CONSTRUCTION. SEE THE PROJECT MANUAL FOR THE ESTIMATED TIMELINE FOR EACH PHASE OF CONSTRUCTION.
2. THE FURNITURE DEALER WILL BE REQUIRED TO COORDINATE PROCUREMENT TIMELINE WITH THE CONSTRUCTION MANAGER'S PROJECT SCHEDULE.
3. GRAY TONE AREAS ARE NOT IN CONTRACT FOR FURNITURE SCOPE OF WORK.



1 FURNITURE PLAN LEVEL 2 AREA A
 SCALE: 1/8" = 1'-0"



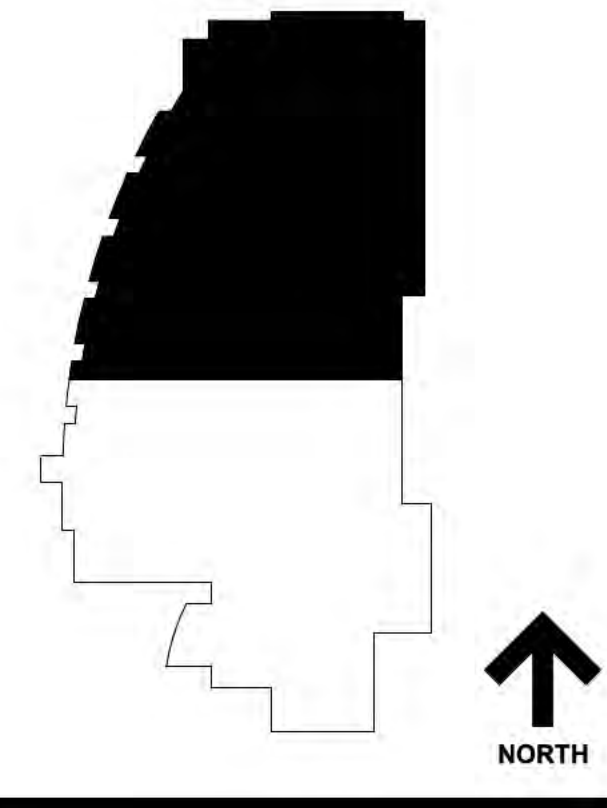
ORLAND PARK PUBLIC LIBRARY

Wight

Wight & Company
 wightco.com
 2500 North Frontage Road
 Darien, IL 60561
 P 630.969.7000
 F 630.969.7979

michael c barnes ARCHITECT

michael c barnes architect, pllc
 design architect
 (312) 877-0130
 michael@mcbaarchitect.com



NOT FOR CONSTRUCTION

ORLAND PARK PUBLIC LIBRARY

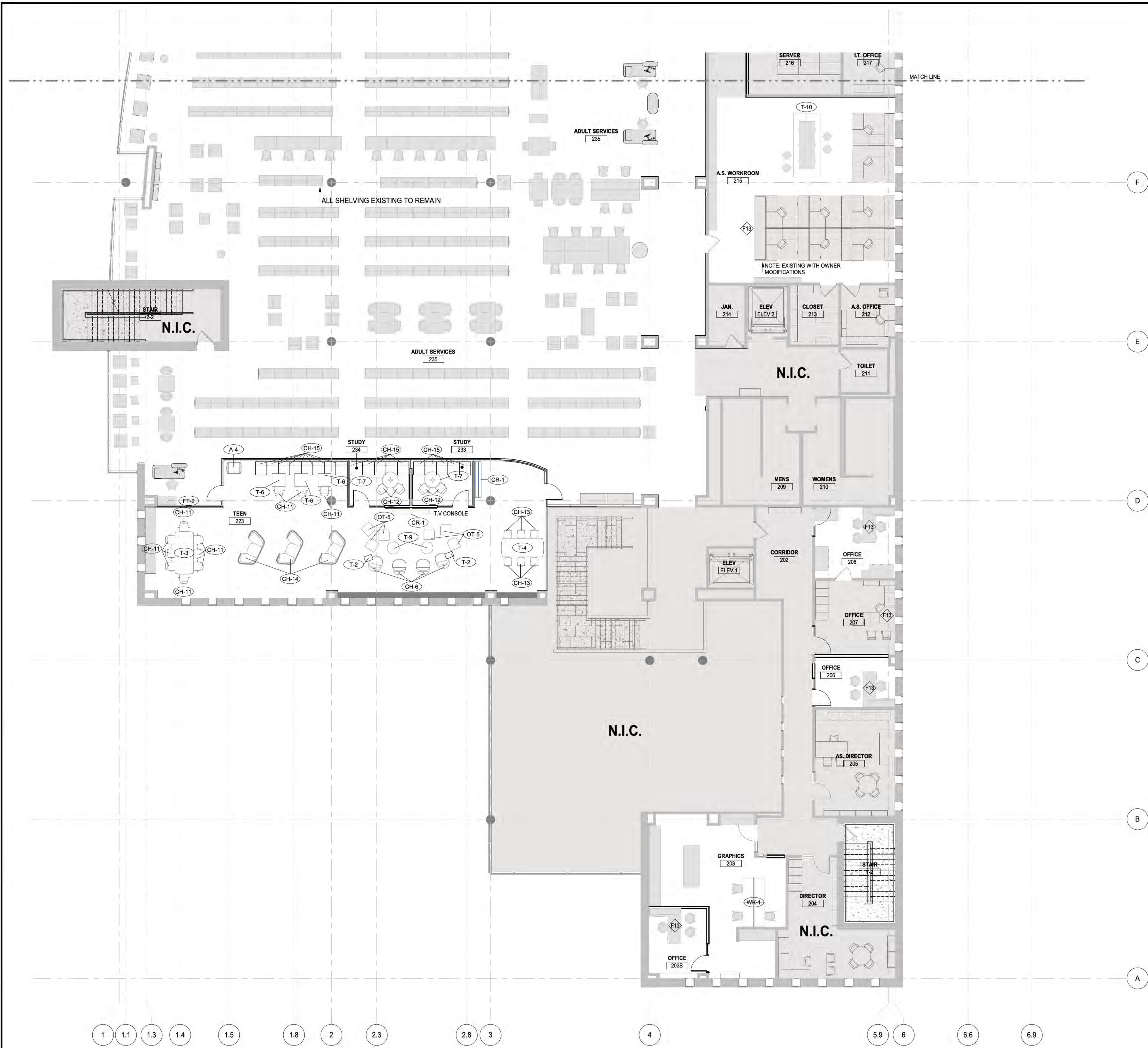
14921 S. RAVINIA AVE
 ORLAND PARK, IL 60462

FURNITURE PLAN LEVEL 2 AREA A

Project Number:
 190041
 Drawn By:
 EO
 Sheet:

A11.02A

01/13/2019 4:09:48 PM
 C:\Users\ebarnard\Documents\REV\108-5992-01 OPP_L Furniture 2019 Central_ebarnard\2019\01
 Wight & Co. © Copyright 2019 All rights reserved. No part of these documents may be reproduced, stored, or transmitted in any form or by any means, electronic, mechanical, photocopying, recording or otherwise, without the prior written consent of Wight & Co.



GENERAL NOTES	
1.	THE FURNITURE PROCUREMENT AND INSTALLATION WILL OCCUR DURING A PHASED CONSTRUCTION. SEE THE PROJECT MANUAL FOR THE ESTIMATED TIMELINE FOR EACH PHASE OF CONSTRUCTION.
2.	THE FURNITURE DEALER WILL BE REQUIRED TO COORDINATE PROCUREMENT TIMELINE WITH THE CONSTRUCTION MANAGER'S PROJECT SCHEDULE.
3.	GRAY TONE AREAS ARE NOT IN CONTRACT FOR FURNITURE SCOPE OF WORK.

KEYNOTES	
F13	EXISTING PRIVATE OFFICE FURNITURE TO BE COORDINATED BY OWNER'S FURNITURE DEALER.



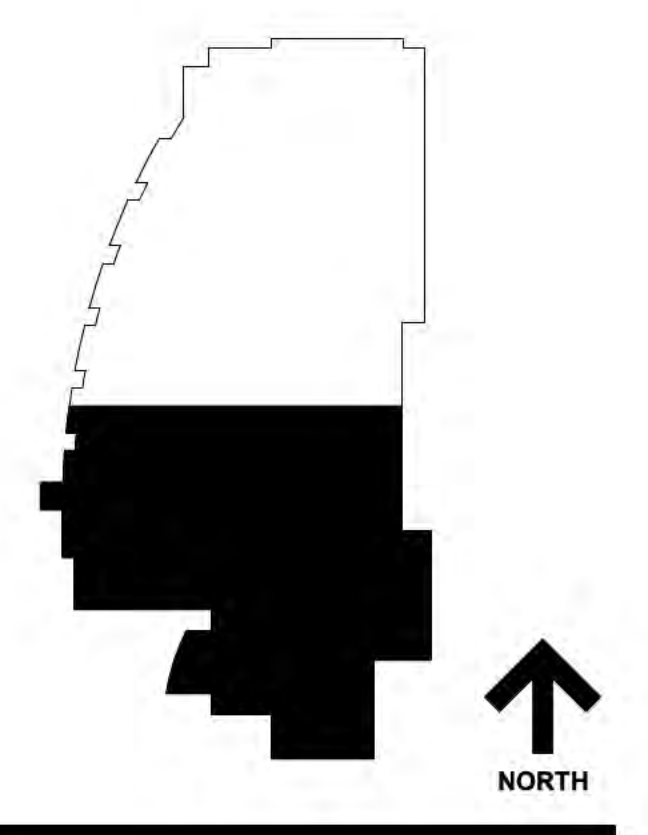
ORLAND PARK PUBLIC LIBRARY

Wight

Wight & Company
 wightco.com
 2500 North Frontage Road
 Darien, IL 60561
 P 630.969.7000
 F 630.969.7979

michael c barnes ARCHITECT

michael c barnes architect, pllc
 design architect
 (312) 877.0130
 michael@mcbarnesarchitect.com



NOT FOR CONSTRUCTION

V SS B SS 9 9

ORLAND PARK PUBLIC LIBRARY

14921 S. RAVINIA AVE
 ORLAND PARK, IL 60462

FURNITURE PLAN LEVEL 2 AREA B

Project Number:
 190041
 Drawn By:
 EO
 Sheet:

A11.02B

1 FURNITURE PLAN LEVEL 2 AREA B
 SCALE: 1/8" = 1'-0"