

# Did you know?

We had  
**413,147**  
Library Visits  
in 2019



## Commemorative and Paver Stones Available at the Library!

A \$150 gift entitles you to a 4" x 8" paver with three lines for personalization. A gift of \$225 entitles you to an 8" x 8" paver with five lines. Pavers are in the front Plaza of the library and are installed twice a year.



# Building on our Commitment to You

## Name a Bookshelf

Engraved plaques with a name inscription are installed on end panels. End panel plaques cost \$500.



## Library Board of Trustees

Joanna M. Liotine Leafblad  
*President*

Nancy Wendt Healy  
*Trustee*

Christian J. Barcelona  
*Vice President*

Elan Kleis  
*Trustee*

Daniel McMillan  
*Treasurer*

Bridget M. Lindbloom  
*Trustee*

Charles McShane  
*Secretary*



*"The health of our civilization, the depth of our awareness about the underpinnings of our culture and our concern for the future can all be tested by how well we support our libraries."*

American Scientist & Author Carl Sagan

**648,885**  
Total Items  
Checked Out



**2,127**  
New Library Cards



\*2019 IPLAR statistics

## The Library Reaches Everyone

### Benefits of Giving to the Capital Campaign

- Public recognition for your support via a dedication ceremony
- Help those in need of library services
- Be a part of an exclusive group of community members who give back



ORLAND PARK  
PUBLIC LIBRARY

Aileen S. Andrew Memorial Library  
*A Natural Connection*

14921 Ravinia Avenue, Orland Park, IL 60462  
phone 708-428-5100 • [orlandparklibrary.org](http://orlandparklibrary.org)  
[gifts@orlandparklibrary.org](mailto:gifts@orlandparklibrary.org)



ORLAND PARK  
PUBLIC LIBRARY

Aileen S. Andrew Memorial Library  
*A Natural Connection*

Your support is crucial to ensure that the Orland Park Public Library can provide the superior services our community expects now and in the future.

The Orland Park Public Library was honored to be named one of Illinois' 200 Great Places by the Illinois Council of The American Institute of Architects in recognition of the state's Bicentennial in 2018. Some have referred to us as the "jewel" of the community with a large diverse collection, extensive services for all patrons, a spacious facility and supported by a knowledgeable and friendly staff.

Since this award-winning building was opened in 2004, the Board of Library Trustees and staff

understood that providing a contemporary space and the latest materials and technology was of the utmost importance. Times change quickly, and the library facility is used much differently than when it was opened. To that end, the library is creating flexible spaces to accommodate patrons' needs without compromising the beauty and openness of the building.

The original Design Architect of the building, Michael Barnes, of michael c barnes architect, pllc together with the architectural firm Wight & Co. are using their considerable talents to repurpose spaces in many public areas to offer more study rooms, a larger meeting room for programs, an updated Computer Lab and Technology Center, a Sensory Room, a lactation room called The Nest, a more playful preschool/toddler area, a designated Teen Loft, a welcoming tween space called The In-Between, and a nature center called The Backyard to provide outdoor STEAM activities, storytimes, and other programs that make the library "a natural connection" to learning.

A well-established and strong library is a valuable asset to a community. It was through the generosity of the Andrew Foundation and the support of the residents of Orland Park that this library is one of the most noted libraries in the south suburbs. Companies benefit when the community is a desirable place to work, live and do business.

This new renovation has brought about an opportunity for the community to make donations to the capital campaign fund in exchange for naming rights to the new areas of the library.

## Aileen S. Andrew Memorial Library

The Andrew Foundation had such a significant impact on the growth of the Orland Park Public Library through the 1970s and 1980s that the library is proud to be called the Aileen S. Andrew Memorial Library.



# Your Connection

Tax-deductible gifts can be made through the Friends of the Orland Park Public Library, a 501(c)3 organization.

## Naming Rights and Gift Opportunities

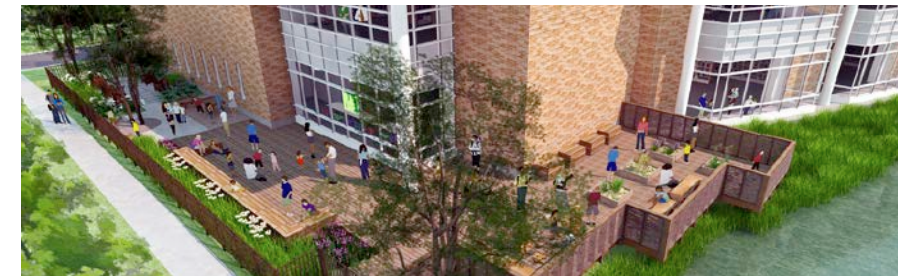
Children's Library	\$150,000
Large Meeting Room	\$75,000
The Backyard	\$75,000
Program Stage	\$10,000
Pond Overlook	\$10,000
Reading Garden Nook	\$5,000
Raised Sensory Garden Beds (4 available)	\$3,000
Build It Zone	\$3,000
Tree Stump Jump	\$3,000
Rustic Log Bench	\$1,000
Water Activity Table	\$1,000
Shade Tree	\$1,000
Teen Loft	\$50,000
The In-Between	\$50,000
Computer Lab	\$50,000
Friends Room	\$50,000
Multi-Purpose Room	\$25,000
Children's Craft Room	\$20,000
Sensory Room	\$15,000
Technology Center	\$15,000
The Nest	\$10,000
Study Rooms (9 available)	\$10,000
Bay Window Reading areas (9 available)	\$5,000
Patron Holds shelves	\$2,000
Benches in the Plaza (9 available)	\$1,000

## Children's Library

The Children's Library is located on the first floor of the library. It contains beautiful bay windows and shorter book shelves. It will also include more child-friendly furniture and be easier to recognize.



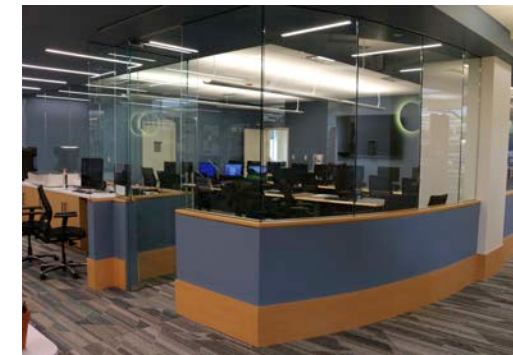
## The Backyard



The Library is no longer contained within 4 walls with The Backyard. This will be a totally new place for all patrons to explore and learn.

## Computer Lab

The Computer Lab provides library cardholders with a space where they can use various digital media technologies to support educations, professional, and personal goals. Some of that technology includes a green screen, a VHS to DVD converter, and a 3D printer. The wall between the Computer Lab and the hall has come down, so more residents can enjoy this space.



Renderings accredited to Architect Michael C. Barnes, pllc